




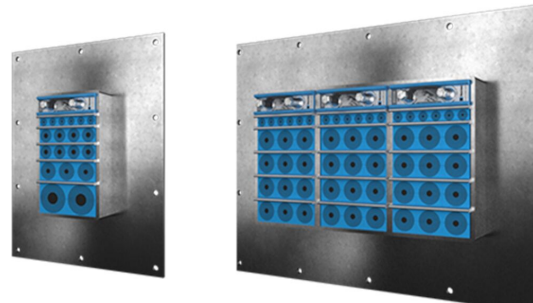


Passaggio Roxtec GH FL100

Passaggio con flangia maggiorata, per imbullonatura su strutture irregolari.

Roxtec GH FL100 è un sistema di sigillatura che permette configurazioni ad alta densità di cavi e tubi. Il passaggio garantisce una tenuta ottimale quando imbullonato su pareti/pavimenti in cemento o mattoni. Il telaio rettangolare in acciaio ha una flangia larga 100 mm per consentire il posizionamento dei fori per l'imbullonatura più distanti rispetto al foro nella parete ed evitare così il rischio di crepe. Il passaggio può essere utilizzato con una controflangia GE in acciaio che permette di coprire l'intero spessore della parete.

-  Previene l'ingresso di roditori
-  Compatto
-  Facilità di manutenzione e controllo



Caratteristiche



Resistenza al fuoco



IP/UL NEMA

Struttura dell'installazione



Cemento



Mattone



Tipo di montaggio



Imbullonatura

Ratings e certificati

Fuoco

-  Classificazione E/EI secondo EN 13501
-  Classificazione F/T secondo UL 1479

Tenuta

-  IP 66/67

Dimensioni telaio

mm/kg

Le varianti di telaio seguenti rappresentano una selezione limitata. Per la gamma completa di telai e configurazioni, visita [roxtec.com](https://www.roxtec.com).

Titolo	Aperture del telaio	Spazio di riempimento	Dimensioni esterne WxHxD	Dimensioni apertura w x h	Peso	Art. Nr.
GH 6x1 FL100 GALV	1	120 x 180	332.5 x 430 x 60	148(+5/-5) x 245(+5/-5)	7.8	122158
GH 6x2 FL100 GALV	2	120 x 180	463 x 430 x 60	278(+5/-5) x 245(+5/-5)	11	122159
GH 6x3 FL100 GALV	3	120 x 180	593.5 x 430 x 60	409(+5/-5) x 245(+5/-5)	13.8	122160
GH 6x1 FL100 AISI316	1	120 x 180	332.5 x 430 x 60	148(+5/-5) x 245(+5/-5)	7.4	105508
GH 6x2 FL100 AISI316	2	120 x 180	463 x 430 x 60	278(+5/-5) x 245(+5/-5)	10.5	120984
GH 6x3 FL100 AISI316	3	120 x 180	593.5 x 430 x 60	409(+5/-5) x 245(+5/-5)	13	105509



Dati relativi ai componenti

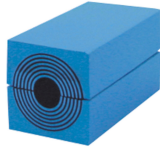
Componenti per la sigillatura



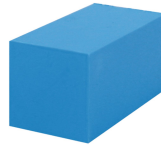
Lubrificante



Wedge kit e Wedge Roxtec



Modulo RM con
Multidiameter™



Blocco di riempimento RM



Piastra di ancoraggio
Roxtec



Controflangia GE



Accessori Holder



kit di sigillatura

Per informazioni dettagliate, visita la pagina [roxtec.com](https://www.roxtec.com).

The product information provided by Roxtec does not release the purchaser of the Roxtec system, or part thereof, from the obligation to independently determine the suitability of the products for the intended process, installation and/or use.

Roxtec gives no guarantee for the Roxtec system or any part thereof and assumes no liability for any loss or damage whatsoever, whether direct, indirect, consequential, loss of profit or otherwise, occurred or caused by the Roxtec systems or installations containing components not manufactured by an authorized manufacturer and/or occurred or caused by the use of the Roxtec system in a manner or for an application other than for which the Roxtec system was designed or intended.

Roxtec expressly excludes any implied warranties of merchantability and fitness for a particular purpose and all other express or implied representations and warranties provided by statute or common law. User determines suitability of the Roxtec system for intended use and assumes all risk and liability in connection therewith. In no event shall Roxtec be liable for indirect, consequential, punitive, special, exemplary or incidental damages or losses.

The Roxtec products are offered and sold in accordance with the conditions of the Roxtec General Terms of Sales. The latest version of the Roxtec General Terms of Sales can be downloaded from <https://www.roxtec.com/en/about-us/about-roxtec/general-terms-of-sales/>

We reserve the right to make changes to the product and technical information without further notice. Any errors in print or entry are no claims for indemnity. The content of this publication is the property of Roxtec International AB and is protected by copyright.

This document was generated on: 2024-04-18